

BULLION PROPERTY

10.9 Square Kilometres

1095 Hectares

**2016 J2 Grab Samples assaying up to:
1.8 grams per tonne Gold**

SAMPLE S321045

1.34 grams per tonne Gold

Quartz-Pyrite vein with strong iron oxides

1.6m chip sample in Outcrop

GOLDBUG TREND

- BULLION PROPERTY -



S321045

Pink ribbon marking

AREA OF SAMPLE S022924

1.81 grams per tonne Gold

Quartz veining with fine black pyrite

Grab from Outcrop

GOLDSPREE SHOWING

- BULLION PROPERTY -





SAMPLE S320970

0.25 grams per tonne Gold

**Quartz lenses up to 1m wide in ptyllite
with sulphides in fractures and disseminated**

Grab from Outcrop

GOLDBUG TREND

- BULLION PROPERTY -

SAMPLE S321044

0.14 grams per tonne Gold

Quartz-Pyrite vein with strong iron oxides

3m chip sample in Outcrop

GOLDBUG TREND

- BULLION PROPERTY -

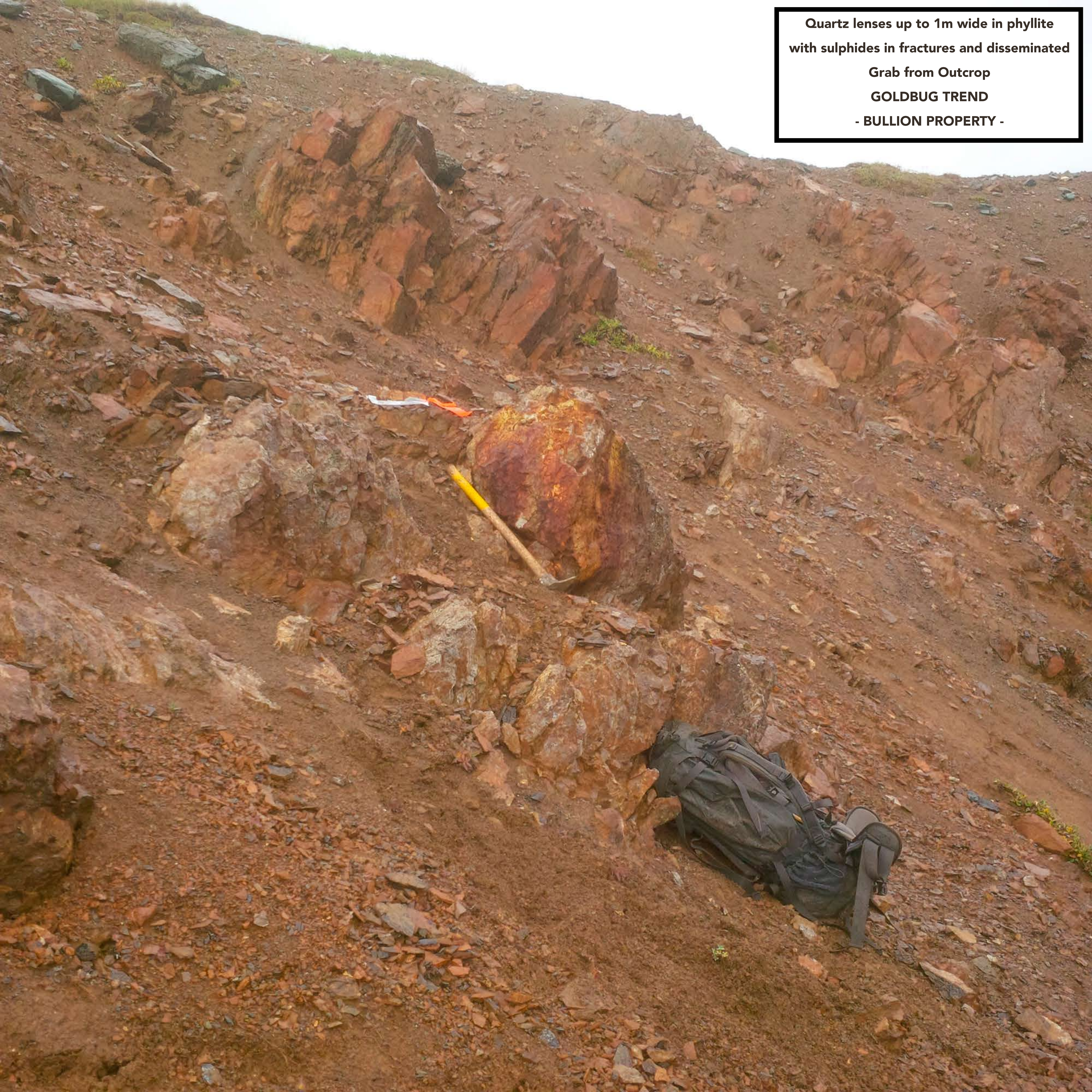


**Quartz lenses up to 1m wide in phyllite
with sulphides in fractures and disseminated**

Grab from Outcrop

GOLDBUG TREND

- BULLION PROPERTY -





ALS minerals
 DATE: Aug 2014
 REMARKS:
 (Assayer's Use) S022923
 (Assayer's Use) S022923

**Undulating Quartz Veining
 with disseminated sulphides
 GOLDSFREE SHOWING
 - BULLION PROPERTY -**