

GOLD RIDGE PROPERTY

11.6 Square Kilometres

1165 Hectares

GRAVY TRAIN ZONE in foreground

2016 J2 Grab Samples up to:

3.89 grams per tonne Gold

0.56% Copper

**Recent glacial recession has exposed
newly discovered mineralization.**

SAMPLE S320738

3.89 grams per tonne Gold

0.56% Copper

**Volcanics with disseminated sulphides
and copper oxides**

Grab Sample

GRAVY TRAIN ZONE

- GOLD RIDGE PROPERTY -



DATE: _____

MARKS: _____



(see)



SAMPLE S320740

2.14 grams per tonne Gold

0.45% Copper

**Altered volcanics with copper
oxides**

0.5m chip sample in Outcrop

GRAVY TRAIN ZONE

- GOLD RIDGE PROPERTY -



SAMPLE S320737

0.22 grams per tonne Gold

0.17% Copper

**Altered volcanics with
disseminated sulphides**

Grab from Outcrop

GRAVY TRAIN ZONE

- GOLD RIDGE PROPERTY -

SAMPLE S320741

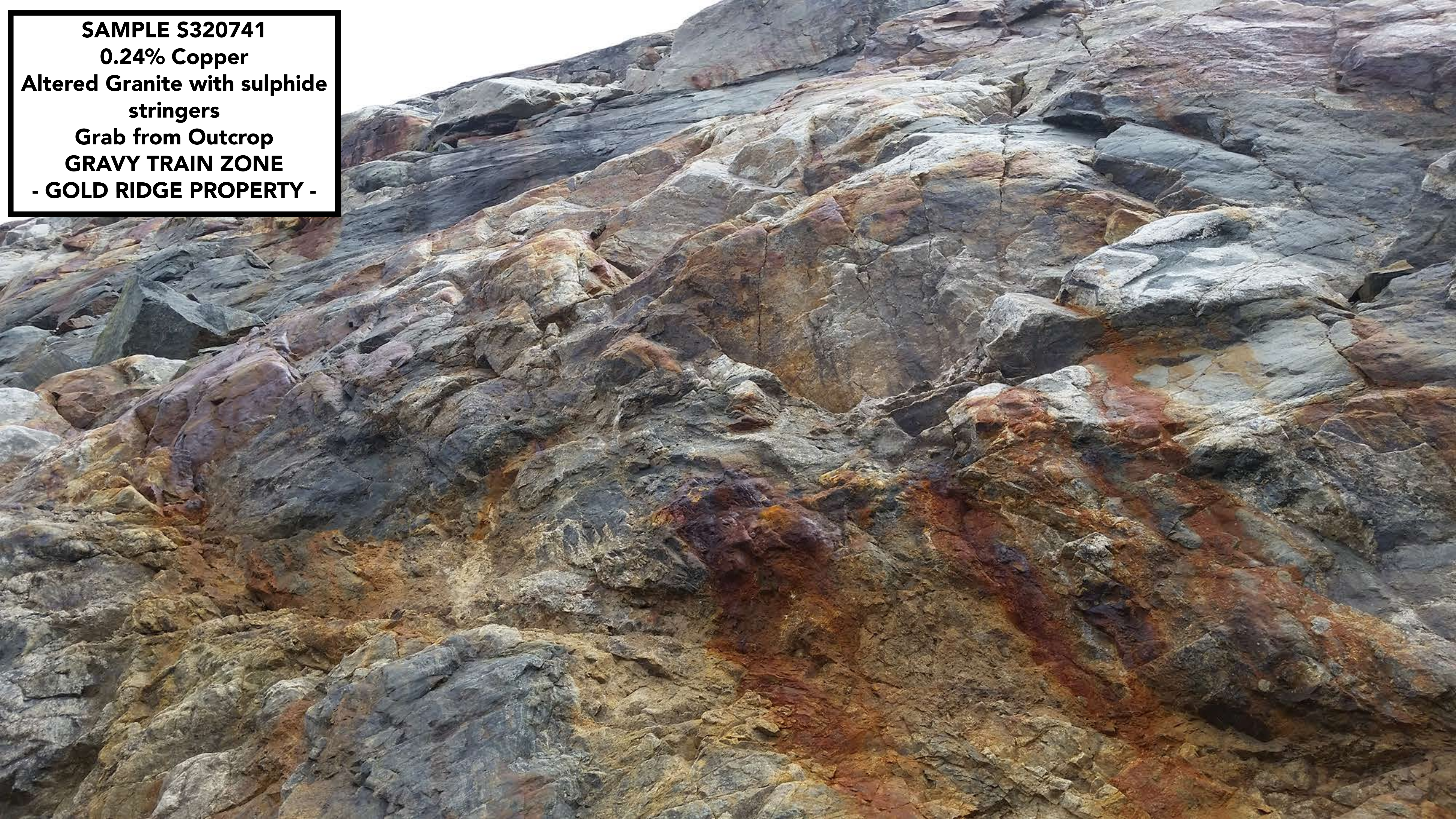
0.24% Copper

**Altered Granite with sulphide
stringers**

Grab from Outcrop

GRAVY TRAIN ZONE

- GOLD RIDGE PROPERTY -



SAMPLE S320741

0.24% Copper

**Altered Granite with sulphide
stringers**

Grab from Outcrop

GRAVY TRAIN ZONE

- GOLD RIDGE PROPERTY -

(Assayer's Use)

S320741





(Assayer's Use)
2014)
S320739
S320739
(Assayer's Use)

SAMPLE S320739
0.24 grams per tonne Gold
Altered volcanics with
disseminated sulphides
Grab from Outcrop
GRAVY TRAIN ZONE
- GOLD RIDGE PROPERTY -

**Recemented Quartz-Carbonate
Vein Breccia in Outcrop
- GOLD RIDGE PROPERTY -**



**Recemented Quartz-Carbonate
Vein Breccia in Outcrop
- GOLD RIDGE PROPERTY -**

als

(09/2014)

(Assayer's Use)

S022686



S022686

(Assayer's Use)

Detailed description: A white paper label with a barcode and identification numbers. The label is partially obscured by a rock sample. It features a barcode in the center, with the number 'S022686' printed above and below it. To the left of the barcode, there are several horizontal lines and the text '(Assayer's Use)'. To the right, there is another '(Assayer's Use)' label. The date '(09/2014)' is printed at the bottom left. The word 'als' is partially visible at the top left.





5022687

Quartz vein talus with disseminated sulphides - GOLD RIDGE PROPERTY -



**Rusty Quartz Vein Talus
with epithermal textures
- GOLD RIDGE PROPERTY -**



minerals
S022688
S022688
(Assayer's Use)

**Rusty Quartz Vein Talus
with epithermal textures
- GOLD RIDGE PROPERTY -**